

# Teladoc Health™ Lite® 4 with Boom Camera

## Quick Reference Guide



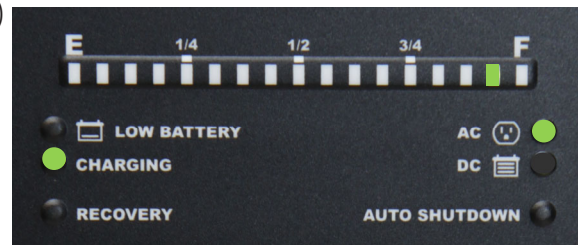
### Power Status Indicator

The battery charge indicator is located on the side of the storage compartment. The Battery charge lights indicate the remaining percentage of battery life whenever the Lite 4 with Boom is plugged in or turned on. If the battery charge drops too low, the sound-byte “Please plug me in” is played until the Lite 4 with Boom is plugged into AC power. Plug in the Lite 4 with Boom as soon as possible.

Status Light	Description
Low Battery	Battery Level has dropped below safe operating levels and must be plugged in to recharge.
Charging	Plugged in and charging.
AC	Plugged into AC power.
DC	Running off of battery.

### Powering on the Lite 4 with Boom

1. Unplug the Lite 4 with Boom.
2. Verify the battery rocker switch in the ON position (—) to the right.
3. Plug in the Lite 4 with Boom.
  - A tone will be heard.
  - If the **E** light and **RECOVERY** lights are lit on the Power Status, redo steps 1-3.
4. Wait 30 seconds.
5. Press the power button on back of the head.



### Powering off the Lite 4 with Boom—For Storage

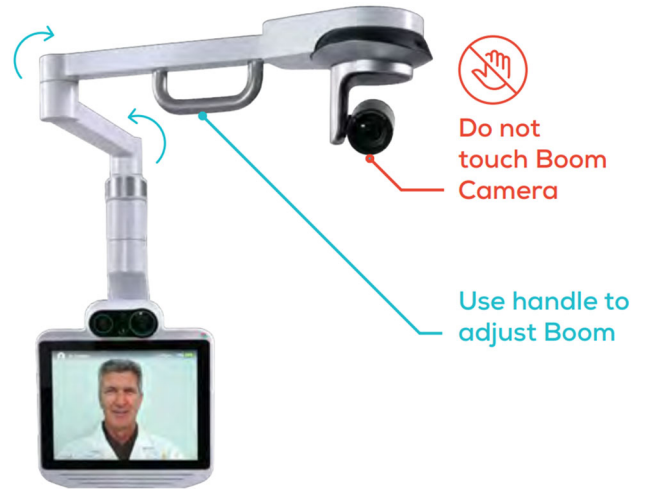
1. Press the power button on back of the head.
2. Press the power button a second time to confirm the shutdown.
3. Unplug the Lite 4 with Boom from the wall.
4. Flip the battery rocker switch on the base of the Lite 4 with Boom to the OFF (O) position to the left.

**NOTE:** If the Lite 4 with Boom is going to be powered off for more than 2 hours, the battery rocker switch **must** be turned off after powering down and unplugging the Lite 4 with Boom.

# Lite<sup>®</sup> 4 with Boom Camera Quick Reference Guide

## Adjusting the Height of the Lite 4 with Boom



The Lite 4 with Boom head can be adjusted by raising or lowering the head to the desired height. Adjust the height with two hands on each side of the display and gently raise or lower the display.

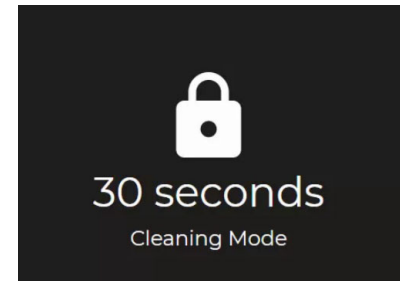


## Adjusting the Boom

1. Lock the device's wheels.
2. Set the Head to its lowest position.
3. Use the boom handle to rotate the Boom to the desired position. **Do not touch the Boom Camera.**

## Cleaning the Lite 4 with Boom

Tap Settings  > Cleaning Mode  to disable the screen for 30-seconds to allow cleaning. See the online user guide for details on cleaning the Lite 4 with Boom with tested cleaning chemicals.







## Moving the Lite 4 with Boom

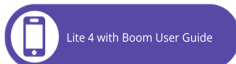
Prior to moving the Lite 4 with Boom:

1. Ensure the Lite 4 with Boom is set at its lowest position.
2. Fold and lower the boom to the storage position prior to transport.
3. Ensure any auxiliary devices attached to the Lite 4 with Boom are unplugged.
4. Ensure the power cord is unplugged and hung on the Lite 4 with Boom's handle.
5. Ensure the wheels are unlocked before moving.
6. Exercise caution when encountering thresholds and doorways.
7. Move to the desired location.
8. Lock the wheels.
9. Plug in the power cord.

## Lite 4 with Boom Screen Navigation

Icon	Function
	Tap to preview any of the cameras connected to the device.
	Tap to open device settings.
	Tap to open the device's User Guide.
	Tap to display information about the Lite 4 with Boom.

Teladoc Health (Hardware)  
24/7 Technical Support  
+1 877-484-9119



## Device Network Checkup

The Network Checkup screen runs and displays the results of a test of the device's current network connection.

Tap Settings  > Network Checkup  to run the Network Checkup.

