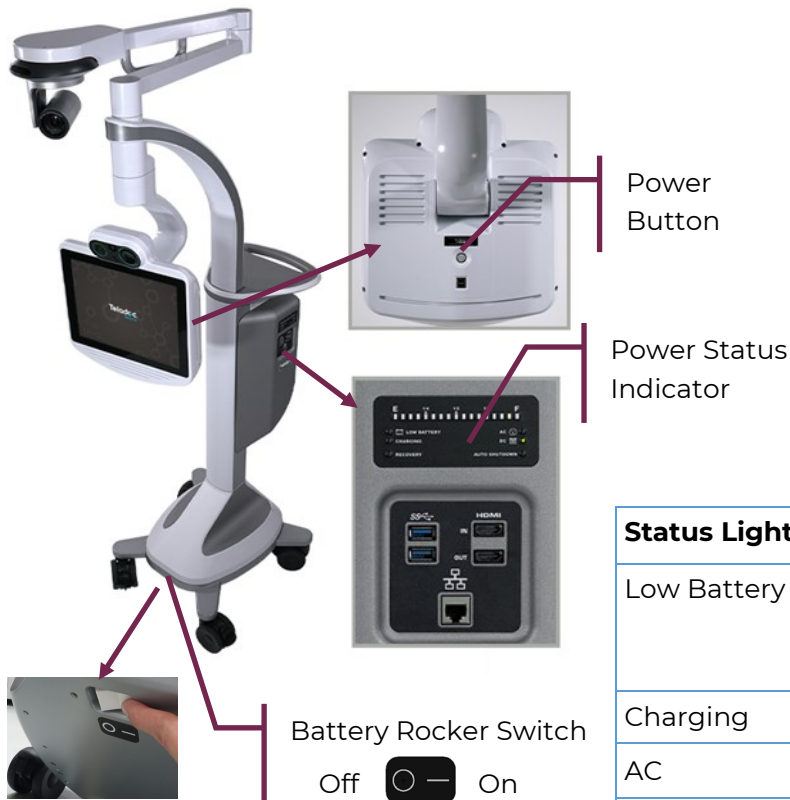


# Teladoc Health™ Lite® 4 with Boom Camera for Proximie

## Quick Reference Guide



### Power Status Indicator

The battery charge indicator is located on the side of the storage compartment.

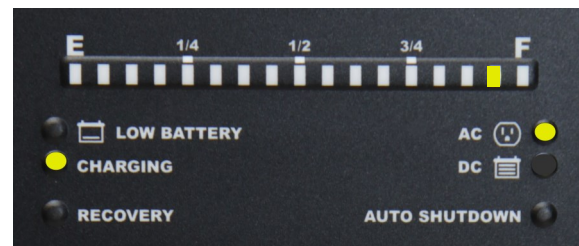
The Battery charge lights indicate the remaining percentage of battery life whenever the Lite 4 is plugged in or turned on.

If the battery charge drops too low, the sound-byte “Please plug me in” is played until the Lite 4 is plugged into AC power. Plug in the Lite 4 as soon as possible.

Status Light	Description
Low Battery	Battery Level has dropped below safe operating levels and must be plugged in to recharge.
Charging	Lite 4 is plugged in and charging.
AC	Lite 4 is plugged into AC power.
DC	Lite 4 is running off of battery.

### Powering on the Lite 4

1. Unplug the Lite 4.
2. Flip the battery rocker switch to the ON position (—) to the right.
3. Plug in the Lite 4.
  - A tone will be heard.
  - If the **E** light and **RECOVERY** lights are lit on the Power Status, redo steps 1-3.
3. Wait 30 seconds.
4. Press the power button on back of the head.



### Powering off the Lite 4—For Storage

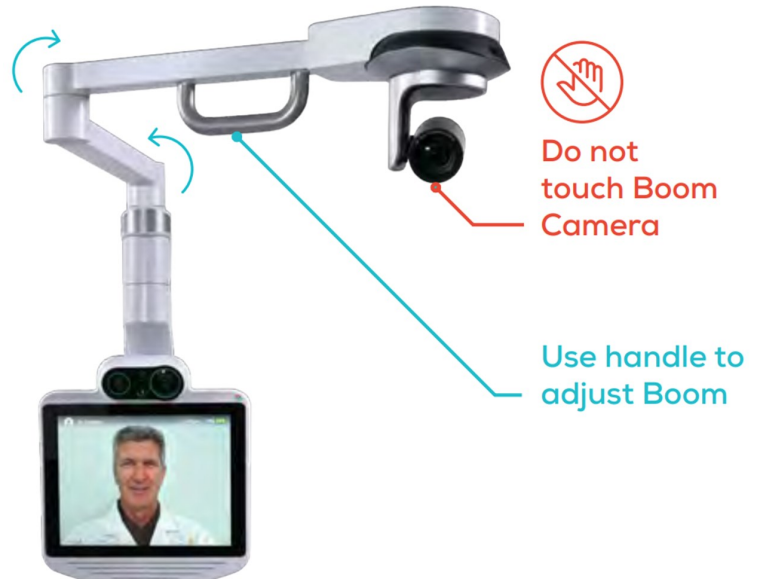
1. Press the power button on back of the head.
2. Press the power button a second time to confirm the shutdown.
3. Unplug the Lite 4 from the wall.
4. Flip the battery rocker switch on the base of the Lite 4 to the OFF (●) position to the left.

**NOTE:** If the Lite 4 is going to be powered off for more than 2 hours, the battery rocker switch **must** be turned off after powering down and unplugging the Lite 4.

# Lite<sup>®</sup> 4 with Boom Camera for Proximie Quick Reference Guide

## Adjusting the Boom and Head

1. Lock the Lite 4's wheels.
2. Use the handle on the boom to raise and lower the head
3. Use the boom handle to rotate the Boom to the desired position. **Do not touch the Boom Camera.**





## Cleaning Instructions

Clean the outer surfaces of the Lite 4 when visibly soiled or after contact with any contaminates. For the screen, use a commercial LCD screen cleaner and for the camera lenses, use optical lens cleaners.

1. Soak a lint-free cloth in a hospital grade disinfectant solution of sodium hypochlorite 6.15%, e.g., dilution 1:500 (1/4 oz. per gallon water). Wring out the cloth so that drips do not appear when wiping surfaces.
2. Wipe surfaces that have become soiled or contaminated. Avoid applying excess solution, which may enter the Lite 4 through its openings.
3. Allow to air dry.

## Adjusting Boom Camera Image

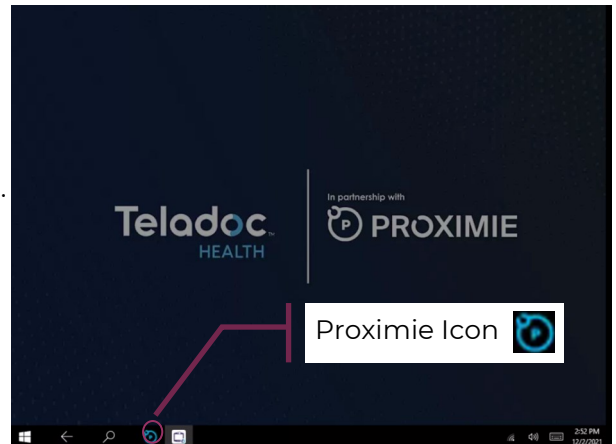
Use the camera remote to adjust the boom camera settings while the boom camera is in use.

1. Press the menu button  
2. Use the arrow buttons to select the Exposure menu.
3. Press the menu button when done adjusting the image.

## Accessing Proximie

Tap the Proximie icon (  ) located on the Lite 4's task bar.

- This opens the Proximie login screen.



## Getting Help

Proximie (Software)  
+1 888-230-2430

Teladoc Health (Hardware)  
24/7 Technical Support  
+1 877-484-9119

